

Certificate of Analysis

Name: ST2

Date: 11/7/2018

Cat. #: MBS150471

Lot #: 1301

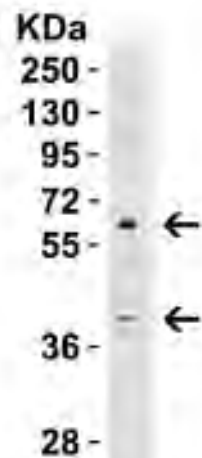
Lysate used: 15 μ g HeLa cell lysate

Recommended Antibody Conc.: 4 μ g/ml

Exposure Time: 5 min

Background: low

Expected size: 64/37 kDa



STORAGE:

ST2 antibody is supplied as immunoaffinity chromatography purified IgG at 1 mg/ml in PBS containing sodium azide. Store at 4°C for three months and -20°C, stable for up to one year.