

Product: Dog Vascular cell adhesion protein 1,V-CAM 1 ELISA

Kit

Specificity: Recombinant and natural Dog Vascular cell adhesion protein

1,V-CAM 1

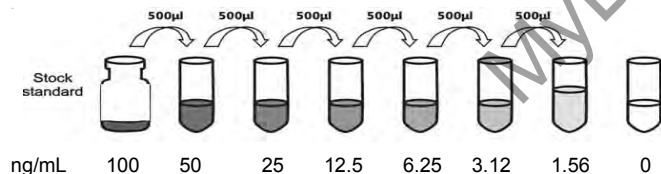
Synonyms: Vascular cell adhesion protein 1(V-CAM 1,VCAM-1)

Catalog No.: MBS288740 Sandwich

Standard Preparation

Reconstitute the Standard with 1.0 mL of Sample Diluent. This reconstitution produces a stock solution of 100 ng/mL. Allow the standard to sit for a minimum of 15 minutes with gentle agitation prior to making serial dilutions (Making serial dilution in the wells directly is not permitted).

The undiluted standard serves as the high standard (100 ng/mL). The Sample Diluent serves as the zero standard (0 ng/mL).



Detection Range: 1.56 ng/mL – 100 ng/mL.

Performance Characteristics: Intra-Assay CV: $\leq 3.7\%$

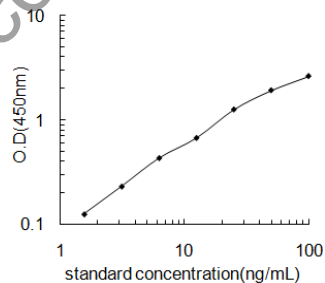
Inter-Assay CV: $\leq 7.1\%$

Spike Average Recovery: 86%

Typical Data

Results of a typical standard curve are provided for demonstration only and should not be used to obtain test results.

A standard curve must be run for each set of samples assayed.



ng/mL	Mean O.D.
100	2.611
50	1.91
25	1.252
12.5	0.67
6.25	0.43
3.12	0.23
1.56	0.125
0	0

IMPORTANT: Please refer to the supplied protocol for more information before the beginning.

FOR RESEARCH USE ONLY. NOT FOR USE IN DIAGNOSTIC PROCEDURES.