

## **PRECISION**

**Intra-assay Precision (Precision within an assay): CV%<8%**

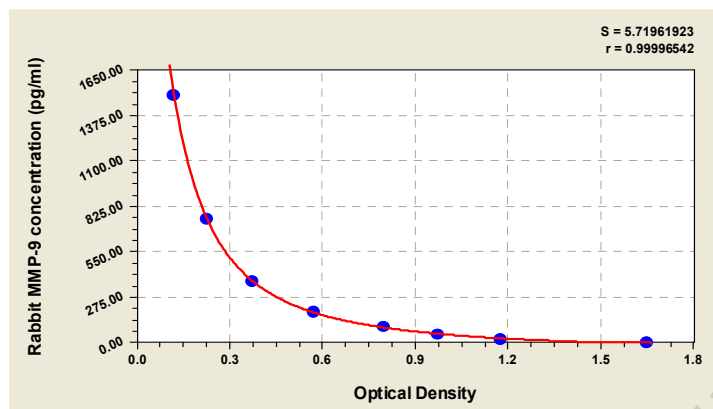
Three samples of known concentration were tested twenty times on one plate to assess.

**Inter-assay Precision (Precision between assays): CV%<10%**

Three samples of known concentration were tested in twenty assays to assess.

## **TYPICAL DATA**

These standard curves are provided for demonstration only. A standard curve should be generated for each set of samples assayed.



pg/ml	OD1	OD2	Average
1500	0.129	0.127	0.128
750	0.226	0.238	0.232
375	0.379	0.370	0.375
187.5	0.572	0.565	0.569
94	0.799	0.785	0.792
47	0.937	0.987	0.962
23.5	1.148	1.168	1.158
0	1.606	1.634	1.620

## **LOD**

5.8 pg/ml.

**LINEARITY**

To assess the linearity of the assay, samples were spiked with high concentrations of rabbit MMP-9 in various matrices and diluted with the Sample Diluent to produce samples with values within the dynamic range of the assay.

	Sample	Serum(n=4)
1:20	Average %	99
	Range %	96-102
1:40	Average %	85
	Range %	92-99
1:80	Average %	101
	Range %	98-104
1:160	Average %	85
	Range %	82-89

**RECOVERY**

The recovery of rabbit MMP-9 spiked to levels throughout the range of the assay in various matrices was evaluated. Samples were diluted prior to assay as directed in the Sample Preparation section.

Sample Type	Average % Recovery	Range
Serum (n=5)	96	93-99
EDTA plasma (n=4)	100	96-104