
Certificate of Analysis

Human sTREM-1(soluble Triggering Receptor Expressed on Myeloid Cells-1) ELISA Kit

Cat.No.: MBS762883

Size: 48T

Lot:H3832D110

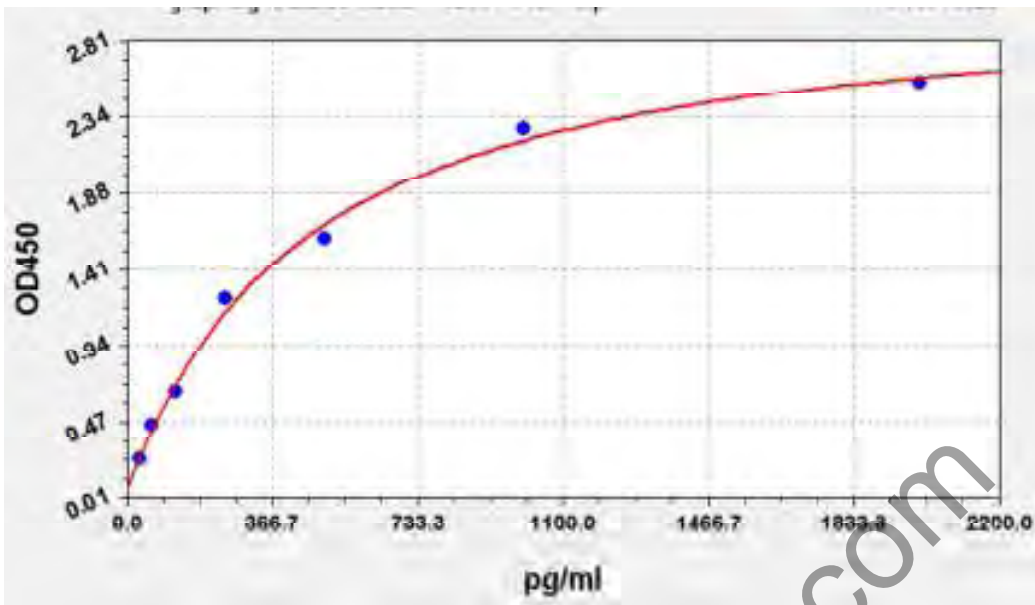
Principle: This ELISA kit uses Sandwich-ELISA as the method

Product expiration Date: 2019/05/01

This product has been tested by Quality Control Department and meets performance specifications mentioned in the manual.

Concentration(pg/ml)	OD-1	OD-2	Average	OD-blank
0	0.066	0.068	0.067	0.000
31.25	0.241	0.247	0.244	0.177
62.5	0.448	0.460	0.454	0.387
125	0.652	0.670	0.661	0.594
250	1.208	1.244	1.226	1.159
500	1.576	1.622	1.599	1.532
1000	2.236	2.300	2.268	2.201
2000	2.524	2.598	2.561	2.494

FOR RESEARCH USE ONLY. NOT FOR USE IN DIAGNOSTIC PROCEDURES.



Performance Characteristics

Intra-Assay CV: $\leq 8\%$

Inter-Assay CV: $\leq 10\%$

Date: 2018/11/01

FOR RESEARCH USE ONLY. NOT FOR USE IN DIAGNOSTIC PROCEDURES.