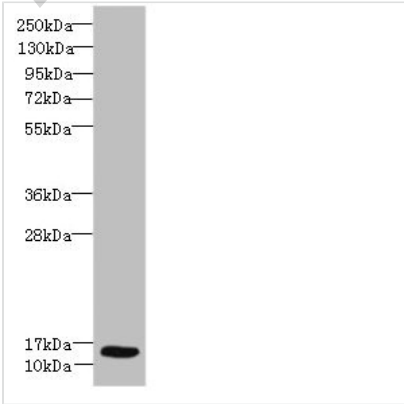


Ly6e Antibody

Product Code	MBS1499643
Storage	Upon receipt, store at -20°C or -80°C. Avoid repeated freeze.
Uniprot No.	Q64253
Immunogen	Recombinant Mouse Lymphocyte antigen 6E protein (21-102AA)
Raised In	Rabbit
Species Reactivity	Mouse, Human
Tested Applications	ELISA, WB; Recommended dilution: WB:1:500-1:2000
Relevance	Involved in T-cell development.
Form	Liquid
Conjugate	Non-conjugated
Storage Buffer	Preservative: 0.03% Proclin 300 Constituents: 50% Glycerol, 0.01M PBS, PH 7.4
Purification Method	>95%, Protein G purified
Isotype	IgG
Clonality	Polyclonal
Alias	Lymphocyte antigen 6E (Ly-6E) (Stem cell antigen 2) (Thymic shared antigen 1) (TSA-1), Ly6e, Ly67 Sca-2 Tsa-1
Species	Mouse
Research Area	Cell Biology
Target Names	Ly6e

Image



Western blot
All lanes: Ly6e antibody at 8µg/ml + Hela whole cell lysate
Secondary
Goat polyclonal to rabbit IgG at 1/10000 dilution
Predicted band size: 14 kDa
Observed band size: 14 kDa