

MBS2002056
Polyclonal Antibody to Heparan Sulfate Proteoglycan (HSPG)
Organism Species: *Homo sapiens* (Human)
Instruction manual

FOR RESEARCH USE ONLY
 NOT FOR USE IN CLINICAL DIAGNOSTIC PROCEDURES

13th Edition (Revised in Aug, 2023)

[PROPERTIES]

Source: Polyclonal antibody preparation
Host: Rabbit
Purification: Antigen-specific affinity chromatography followed by Protein A affinity chromatography
Traits: Liquid
Concentration: 0.5mg/ml
UOM: 100ul
Cross Reactivity: N/A
Applications: Western Blot (WB); Immunohistochemistry (IHC); Immunocytochemistry (ICC); Immunoprecipitation (IP).

[IMMUNOGEN]

Immunogen: Recombinant HSPG (Glu19~Glu144) expressed in *E.coli* (MBS2009846).

[APPLICATIONS]

Western blotting: 0.01-2ug/mL;
 Immunohistochemistry: 5-20ug/mL;
 Immunocytochemistry: 5-20ug/mL;
 Optimal working dilutions must be determined by end user.

[FORMULATION]

Form & Buffer: Supplied as solution form in PBS, pH7.4, containing 0.02% NaN₃, 50% glycerol.

[STORAGE AND STABILITY]

Storage: Avoid repeated freeze/thaw cycles.

Store at 4°C for frequent use.

Aliquot and store at -20°C for 24 months.

Stability Test: The thermal stability is described by the loss rate. The loss rate was determined by accelerated thermal degradation test, that is, incubate the protein at 37°C for 48h, and no obvious degradation and precipitation were observed. The loss rate is less than 5% within the expiration date under appropriate storage condition.

[IDENTIFICATION]

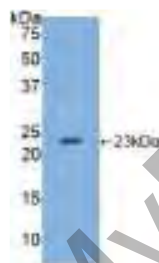
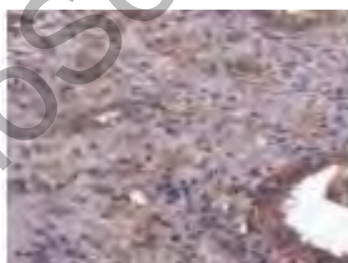


Figure. Western Blot; Sample: Recombinant HSPG, Human.



DAB staining on IHC-P;
 Samples: Human Prostate Tissue;
 Primary Ab: 20ug/ml Rabbit Anti-Human HSPG Antibody
 Second Ab: 2ug/mL HRP-Linked Caprine Anti-Rabbit IgG Polyclonal Antibody (Catalog: MBS2086047)



Western Blot; Sample: Lane 1: Human Serum; Lane 2: HeLa cell lysate; Lane3: HepG2 cell lysate
 Primary Ab: 1ug/ml Rabbit Anti-Human HSPG Antibody
 Second Ab: 0.2ug/mL HRP-Linked Caprine Anti-Rabbit IgG Polyclonal Antibody (Catalog: MBS2086047)

[IMPORTANT NOTE]

The kit is designed for research use only, we will not be responsible for any issue if the kit was used in clinical diagnostic or