

MBS2003374
Polyclonal Antibody to Beta-2-Microglobulin (b2M)
Organism Species: *Canis familiaris*; Canine (Dog)
Instruction manual

FOR RESEARCH USE ONLY
NOT FOR USE IN CLINICAL DIAGNOSTIC PROCEDURES

12th Edition (Revised in Aug, 2016)

[PROPERTIES]

Source: Polyclonal antibody preparation

Host: Rabbit

Purification: Antigen-specific affinity chromatography followed by Protein A affinity chromatography

Traits: Liquid

Concentration: 0.99mg/ml

UOM: 100ul

Cross Reactivity: Human

Applications: Western Blot (WB); Immunohistochemistry (IHC); Immunocytochemistry (ICC); Immunoprecipitation (IP).

[IMMUNOGEN]

Immunogen: Recombinant b2M (Met1~Asn125) expressed in *E.coli* (MBS2011682).

[APPLICATIONS]

Western blotting: 0.5-2ug/mL;

Immunohistochemistry: 5-20ug/mL;

Immunocytochemistry: 5-20ug/mL;

Optimal working dilutions must be determined by end user.

[FORMULATION]

Form & Buffer: Supplied as solution form in 0.01M PBS, pH7.4, containing 0.05% Proclin-300, 50% glycerol.

[STORAGE AND STABILITY]

Storage: Avoid repeated freeze/thaw cycles.

Store at 4°C for frequent use.

Aliquot and store at -20°C for 24 months.

Stability Test: The thermal stability is described by the loss rate. The loss rate was determined by accelerated thermal degradation test, that is, incubate the protein at 37°C for 48h, and no obvious degradation and precipitation were observed. The loss rate is less than 5% within the expiration date under appropriate storage condition.

[IDENTIFICATION]

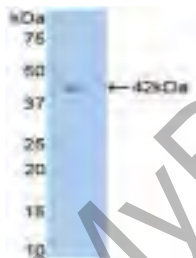


Figure. Western Blot; Sample:
Recombinant b2M, Canine.

[IMPORTANT NOTE]

The kit is designed for research use only, we will not be responsible for any issue if the kit was used in clinical diagnostic or any other procedures.