

**MBS2004004**  
**Polyclonal Antibody to Major Basic Protein (MBP)**  
**Organism Species: *Mus musculus* (Mouse)**  
**Instruction manual**

FOR RESEARCH USE ONLY  
NOT FOR USE IN CLINICAL DIAGNOSTIC PROCEDURES

13th Edition (Revised in Aug, 2023)

**[ PROPERTIES ]**

**Source:** Polyclonal antibody preparation

**Host:** Rabbit

**Purification:** Antigen-specific affinity chromatography followed by Protein A affinity chromatography

**Traits:** Liquid

**Concentration:** 0.36mg/ml

**UOM:** 5ml

**Cross Reactivity:** Rat

**Applications:** Western Blot (WB); Immunohistochemistry (IHC); Immunocytochemistry (ICC); Immunoprecipitation (IP).

**[ IMMUNOGEN ]**

**Immunogen:** Recombinant MBP (Arg37~Lys215) expressed in *E.coli* (MBS2029772).

**[ APPLICATIONS ]**

Western blotting: 0.01-2ug/mL;

Immunohistochemistry: 5-20ug/mL;

Immunocytochemistry: 5-20ug/mL;

Optimal working dilutions must be determined by end user.

**[ FORMULATION ]**

**Form & Buffer:** Supplied as solution form in 0.01M PBS, pH7.4, containing 0.05% Proclin-300, 50% glycerol.

**[ STORAGE AND STABILITY ]**

**Storage:** Avoid repeated freeze/thaw cycles.

Store at 4°C for frequent use.

Aliquot and store at -20°C for 24 months.

**Stability Test:** The thermal stability is described by the loss rate. The loss rate was determined by accelerated thermal degradation test, that is, incubate the protein at 37°C for 48h, and no obvious degradation and precipitation were observed. The loss rate is less than 5% within the expiration date under appropriate storage condition.

**[ IDENTIFICATION ]**

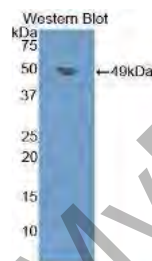


Figure. Western Blot; Sample: Recombinant MBP, Mouse.



Figure. Western Blot; Sample. Lane 1: Rat Liver Tissue; Lane 2: Mouse Brain Tissue; Lane3: Rat Brain Tissue.

**[ IMPORTANT NOTE ]**

The kit is designed for research use only, we will not be responsible for any issue if the kit was used in clinical diagnostic or any other procedures.