

**MBS2012078 100ug**  
**Recombinant Growth Arrest Specific Protein 6 (GAS6)**  
**Organism Species: *Rattus norvegicus* (Rat)**  
**Instruction manual**

FOR RESEARCH USE ONLY  
NOT FOR USE IN CLINICAL DIAGNOSTIC PROCEDURES

13th Edition (Revised in Aug, 2023)

**[ PROPERTIES ]**

**Source:** Prokaryotic expression

**Host:** *E.coli*

**Residues:** Glu100~Gln312

**Tags:** N-terminal His Tag

**Subcellular Location:** Secreted

**Purity:** > 97%

**Traits:** Freeze-dried powder

**Buffer formulation:** PBS, pH7.4, containing 0.01% SKL, 5% Trehalose.

**Original Concentration:** 200ug/mL

**Applications:** Positive Control; Immunogen; SDS-PAGE; Western Blot (WB).

(May be suitable for use in other assays to be determined by the end user.)

**Predicted isoelectric point:** 6.3

**Predicted Molecular Mass:** 24.7kDa

**Accurate Molecular Mass:** 28kDa as determined by SDS-PAGE reducing conditions.

**Phenomenon explanation:**

The possible reasons that the actual band size differs from the predicted are as follows: 1.

Splice variants: Alternative splicing may create different sized proteins from the same gene.

2. Relative charge: The composition of amino acids may affects the charge of the protein.

3. Post-translational modification: Phosphorylation, glycosylation, methylation etc.

4. Post-translation cleavage: Many proteins are synthesized as pro-proteins, and then cleaved to give the active form.

5. Polymerization of the target protein: Dimerization, multimerization etc.

**[ USAGE ]**

Reconstitute in ddH<sub>2</sub>O to a concentration of 0.1-0.25 mg/mL. Do not vortex.

**[ STORAGE AND STABILITY ]**

**Storage:** Avoid repeated freeze/thaw cycles.

Store at 2-8°C for one month.

Aliquot and store at -80°C for 12 months.

**Stability Test:** The thermal stability is described by the loss rate. The loss rate was determined by accelerated thermal degradation test, that is, incubate the protein at 37°C for 48h, and no obvious degradation and precipitation were observed. The loss rate is less than 5% within the expiration date under appropriate storage condition.

**[ SEQUENCE ]**

E

```
DKNPNFATCV KNLPDQCTPN PCDKKGTLQC QDLMGNFFCL CKDGWGGRLC
DKDVNECSQK NGGCSQVCHN KPGSFQCACH SGFSLQSDNK SCQDIDECTD
SDTCGDARCK NLPGSYSCLC DKGTYSSKE KTCQDVDECQ QDRCEQTCVN
SPGSYTCHCN GRGGLKLSPD MDTCEDILPC VPFSMAKSVK SLYLGRMFSG
TPVIRLRFKR LQ
```

**[ IDENTIFICATION ]**

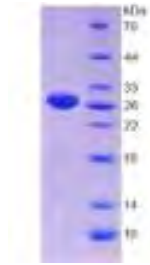


Figure. SDS-PAGE

**[ IMPORTANT NOTE ]**

The kit is designed for research use only, we will not be responsible for any issue if the kit was used in clinical diagnostic or any other procedures.

MyBioSource.com