

**MBS2031769 200ug**  
**Recombinant Estrogen Receptor Alpha (ERα)**  
**Organism Species: *Homo sapiens* (Human)**  
***Instruction manual***  
FOR RESEARCH USE ONLY NOT  
FOR USE IN CLINICAL DIAGNOSTIC PROCEDURES  
13th Edition (Revised in Aug, 2023)

**[ PROPERTIES ]**

**Source:** Prokaryotic expression

**Host:** *E.coli*

**Residues:** Ser178~Met438

**Tags:** N-terminal His Tag

**Subcellular Location:** Membrane, Nucleus, Cytoplasm

**Purity:** > 90%

**Traits:** Freeze-dried powder

**Buffer formulation:** PBS, pH7.4, containing 0.01% SKL, 5% Trehalose .

**Original Concentration:** 250ug/mL

**Applications:** Positive Control; Immunogen; SDS-PAGE; Western Blot (WB).

(May be suitable for use in other assays to be determined by the end user.)

**Predicted isoelectric point:** 9.0

**Predicted Molecular Mass:** 33.4kDa

**Accurate Molecular Mass:** 33kDa as determined by SDS-PAGE reducing conditions.

**[ USAGE ]**

Reconstitute in 10mM PBS (pH7.4) to a concentration of 0.1-1.0 mg/mL. Do not vortex.

**[ STORAGE AND STABILITY ]**

**Storage:** Avoid repeated freeze/thaw cycles.

Store at 2-8°C for one month.

Aliquot and store at -80°C for 12 months.

**Stability Test:** The thermal stability is described by the loss rate. The loss rate was determined by accelerated thermal degradation test, that is, incubate the protein at 37°C for 48h, and no obvious degradation and precipitation were observed. The loss rate is less than 5% within the expiration date under appropriate storage condition.

### [ SEQUENCE ]

```
SAK ETRYCAVCND YASGYHYGVW  
SCEGCKAFFK RSIQGHNDYM CPATNQCTID KNRRKSCQAC RLRKCYEVGM  
MKGKIRKDRR GGRMLKHKRQ RDDGEGRGEV GSAGDMRAAN LWPSPLMIKR  
SKKNSLALSL TADQMVSALL DAEPPILYSE YDPTRPFSEA SMMGLLTNLA  
DRELVHMINW AKRVPGFVDL TLHDQVHLL CAWLEILMIG LVWRSMEHPG  
KLLFAPNLLL DRNQGKCEG MVEIFDMLLA TSSRFRMM
```

### [ IDENTIFICATION ]

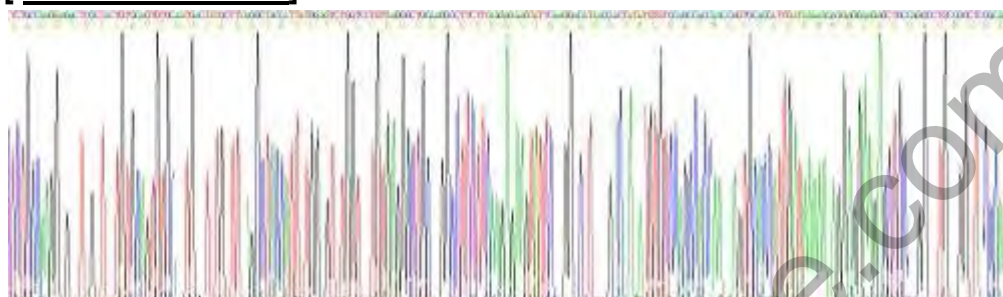


Figure . Gene Sequencing (extract)

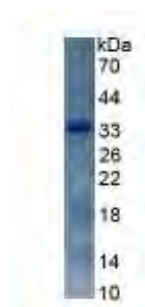


Figure. SDS-PAGE

### [ IMPORTANT NOTE ]

The kit is designed for research use only, we will not be responsible for any issue if the kit was used in clinical diagnostic or any other procedures.