

MBS2032169
Polyclonal Antibody to Elastin Microfibril Interface Located Protein 2 (EMILIN2)
Organism Species: Mus musculus (Mouse)

Instruction manual

FOR IN VITRO USE AND RESEARCH USE ONLY
NOT FOR USE IN CLINICAL DIAGNOSTIC PROCEDURES
10th Edition (Revised in Jan, 2014)

[PRODUCT INFORMATION]

Immunogen: EMILIN2, Mouse

Purification: Affinity Chromatography.

Clonality: Polyclonal

Host: Rabbit

Concentration: 200ug/mL

Immunoglobulin Type: IgG

UOM: 100ug

Applications: Western Blot (WB), Immunocytochemistry (ICC), Immunohistochemistry – Paraffin (IHC-P), Immunohistochemistry – Frozen (IHC-Fr), ELISA

[IMMUNOGEN INFORMATION]

Immunogen: Recombinant EMILIN2 (Arg853~Leu1074) with two N-terminal Tags, His-tag and T7-tag expressed in *E.coli*. (MBS2033373).

[ANTIBODY SPECIFICITY]

The antibody is a rabbit polyclonal antibody raised against EMILIN2. It has been selected for its ability to recognize EMILIN2 in immunohistochemical staining and western blotting.

[APPLICATIONS]

Western blotting: 1:50-400

Immunocytochemistry in formalin fixed cells: 1:50-500

Immunohistochemistry in formalin fixed frozen section: 1:50-500

Immunohistochemistry in paraffin section: 1:10-100

Enzyme-linked Immunosorbent Assay: 1:100-200

Optimal working dilutions must be determined by end user.

[CONTENTS]

Form & Buffer: Supplied as solution form in PBS, pH7.4, containing 0.02% NaN₃, 50% glycerol.

[QUALITY CONTROL]

Content: The quality control contains recombinant EMILIN2 (Arg853~Leu1074) disposed in loading buffer.

Usage: 10uL per well when 3,3'-Diaminobenzidine(DAB) as the substrate. 5uL per well when used in enhanced chemiluminescent (ECL).

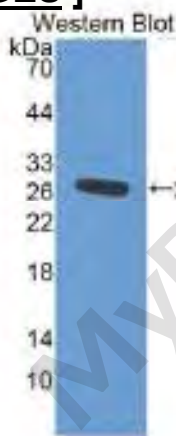
Note: The quality control is specifically manufactured as the positive control. Not used for other purposes.

Loading Buffer: 100mM Tris(pH8.8), 2% SDS, 200mM NaCl, 50% glycerol, BPB 0.01%, NaN₃ 0.02%.

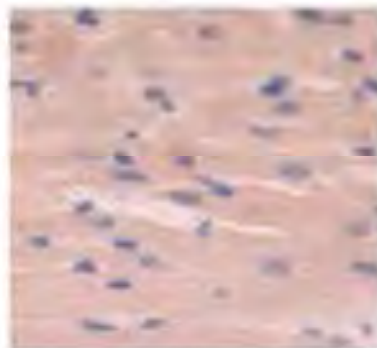
[STORAGE]

Store at 4°C for frequent use. Stored at -20°C to -80°C in a manual defrost freezer for one year without detectable loss of activity. Avoid repeated freeze-thaw cycles.

[IMAGES]



Used in Western Blot, Sample:
Recombinant EMILIN2, Mouse



Used in DAB staining on formalin fixed
paraffin- embedded heart tissue