

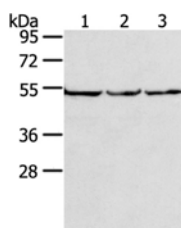
## MMP23A Polyclonal Antibody

**Catalog No.** MBS2522084  
**Storage** Store at -20°C. Avoid freeze / thaw cycles.  
**Applications** WB,IHC,ELISA

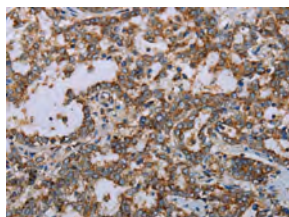
**Reactivity** H  
**Host** Rabbit  
**Isotype** IgG

**Note:** Centrifuge before opening to ensure complete recovery of vial contents.

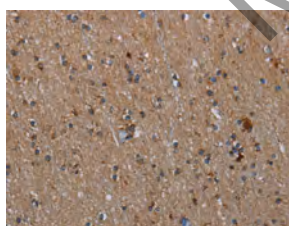
### Images



Western Blot analysis of PC3, hela and A549 cell using MMP23A Polyclonal Antibody at dilution of 1:200



Immunohistochemistry of paraffin-embedded Human liver cancer using MMP23A Polyclonal Antibody at dilution of 1:20



Immunohistochemistry of paraffin-embedded Human brain using MMP23A Polyclonal Antibody at dilution of 1:20

### Immunogen Information

**Immunogen** Synthetic peptide of human MMP23B  
**Gene Accession** NP\_008914  
**Swissprot** O75900  
**Synonyms** MIFR,MMP22,MIFR-1,MMP23A

### Product Information

**Calculated MW** 44kDa  
**Buffer** PBS with 0.05% sodium azide, 50% glycerol, PH7.3  
**Purify** Affinity purification  
**Dilution** WB 1:500-1:2000, IHC 1:25-1:100

### Background

This gene (MMP23B) encodes a member of the matrix metalloproteinase (MMP) family, and it is part of a duplicated region of chromosome 1p36.3. Proteins of the matrix metalloproteinase (MMP) family are involved in the breakdown of extracellular matrix in normal physiological processes, such as embryonic development, reproduction, and tissue remodeling, as well as in disease processes, such as arthritis and metastasis. This gene belongs to the more telomeric copy of the duplicated region.