

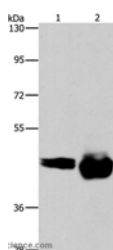
CD38 Polyclonal Antibody

Catalog No. MBS2524752
Reactivity H,M,R
Applications WB,IHC,ELISA

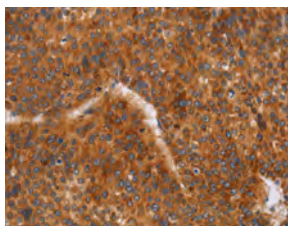
Storage Store at -20°C. Avoid freeze / thaw cycles.
Host Rabbit
Isotype IgG

Note: Centrifuge before opening to ensure complete recovery of vial contents.

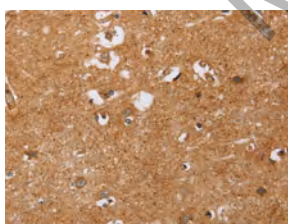
Images



Western Blot analysis of A549 and Raji cell using CD38 Polyclonal Antibody at dilution of 1:520



Immunohistochemistry of paraffin-embedded Human liver cancer using CD38 Polyclonal Antibody at dilution of 1:60



Immunohistochemistry of paraffin-embedded Human brain using CD38 Polyclonal Antibody at dilution of 1:60

Immunogen Information

Immunogen Synthetic peptide of human CD38
Gene Accession NP_001766
Swissprot P28907
Synonyms T10

Product Information

Calculated MW 34kDa
Buffer PBS with 0.05% sodium azide, 50% glycerol, PH7.3
Purify Affinity purification
Dilution WB 1:500-1:2000, IHC 1:50-1:200

Background

CD38 is a novel multifunctional ectoenzyme widely expressed in cells and tissues especially in leukocytes. CD38 also functions in cell adhesion, signal transduction and calcium signaling. Synthesizes cyclic ADP-ribose, a second messenger for glucose-induced insulin secretion. Also has cADPr hydrolase activity. Also moonlights as a receptor in cells of the immune system.