

Product: Mouse Phospholipase D3,PLD 3 ELISA Kit

Specificity: Recombinant and natural Mouse Phospholipase D3,PLD 3

Synonyms: Phospholipase D3(PLD 3);

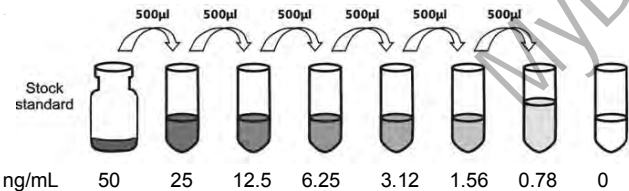
Schwannoma-associated protein 9(SAM-9),Choline

phosphatase 3,Phosphatidylcholine-hydrolyzing phospholipase D3,;

Catalog No.:A 6 G&, &) ** 'GUbXk JW

Standard Preparation

Reconstitute the Standard with 1.0 mL of Sample Diluent. This reconstitution produces a stock solution of 50 ng/mL. Allow the standard to sit for a minimum of 15 minutes with gentle agitation prior to making serial dilutions (Making serial dilution in the wells directly is not permitted). The undiluted standard serves as the high standard (50 ng/mL). The Sample Diluent serves as the zero standard (0 ng/mL).



Detection Range: 0.78-50 ng/mL

Performance Characteristics: Intra-Assay CV: ≤6.5%

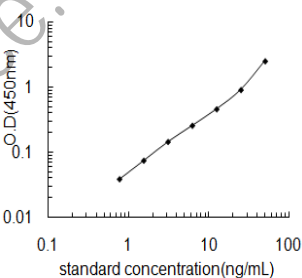
Inter-Assay CV: ≤8.0%

Spike Average Recovery: 87%

Typical Data

Results of a typical standard curve are provided for demonstration only and should not be used to obtain test results.

A standard curve must be run for each set of samples assayed.



ng/mL	Mean O.D.
50	2.478
25	0.9
12.5	0.457
6.25	0.256
3.12	0.145
1.56	0.075
0.78	0.039
0	0

IMPORTANT: Please refer to the supplied protocol for more information before the beginning.