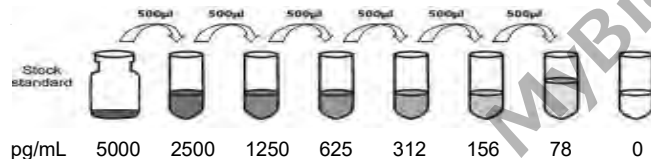


Product Name: Human Protein S100-A9, S100A9 ELISA Kit**Specificity:** Recombinant and natural Human Protein S100-A9, S100A9**Synonyms:** Protein S100-A9;

S100 calcium-binding protein A9, Migration inhibitory factor-related protein 14(MRP-14,p14), Leukocyte L1 complex heavy chain, Calgranulin-B, Calprotectin L1H subunit

Catalog No.: MBS2884755 Sandwich**Standard Preparation**

Reconstitute the Standard with 1.0 mL of Sample Diluent. This reconstitution produces a stock solution of 5000 pg/mL. Allow the standard to sit for a minimum of 15 minutes with gentle agitation prior to making serial dilutions (Making serial dilution in the wells directly is not permitted). The undiluted standard serves as the high standard (5000 pg/mL). The Sample Diluent serves as the zero standard (0 pg/mL).

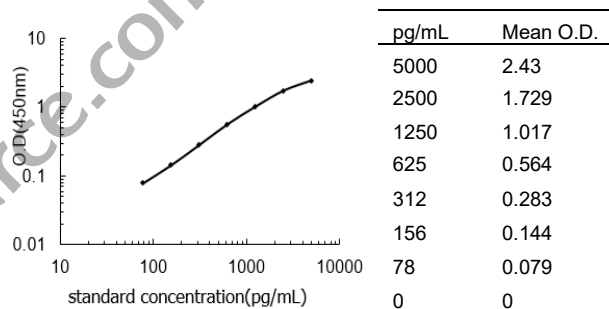
**Detection Range:** 78-5000 pg/mL**Sensitivity:** less than 19.5 pg/mL**Performance Characteristics:** Intra-Assay CV: $\leq 5.8\%$ Inter-Assay CV: $\leq 9.2\%$

Spike Average Recovery: 104%

Typical Data

Results of a typical standard curve are provided for demonstration only and should not be used to obtain test results.

A standard curve must be run for each set of samples assayed.



IMPORTANT: After receiving the kit, please check the intactness of outer packaging, check whether the reagent bottles are broken, leaking or the amount of liquid is significantly reduced, etc. If the diluent is polluted such as flocculent bacterial colonies; the substrate is not transparent and the microtiter plate is leaking, etc; please contact the distributor. In rare cases, the crystals may appear in the substrate. Normally the crystals will dissolve at room temperature, this will not affect the testing results.