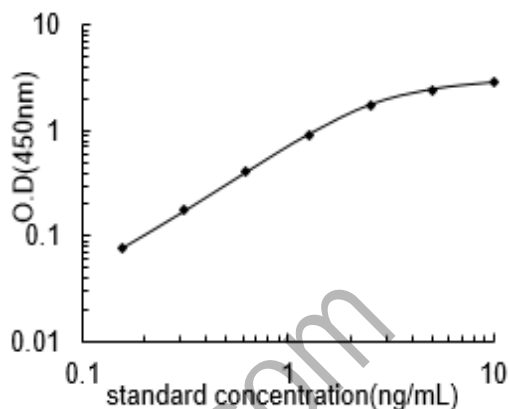


Certificate of Analysis

Product: Human Apoptosis-associated speck-like protein containing a CARD, ASC ELISA Kit

Catalog No: MBS2887570_COA **Lot No:** E7A065C **Exp:** 2017.07.06

Results of a typical standard curve are provide for demonstration only and should not be used to obtain test results. A standard curve must be run for each set of samples assayed.



Performance Characteristics

Intra-Assay CV: $\leq 4.9\%$

Inter-Assay CV: $\leq 7.3\%$

Spike Recovery: 90%

Quick Reference Procedure

IMPORTANT: Please refer to the supplied protocol for preparation of **Working Stocks** as noted below.

Human Phosphoglycerate Kinase 1 Standard Preparation(step 2)

Tube	Working Stock	S ₁	S ₂	S ₃	S ₄	S ₅	S ₆	S ₇	BL
Amount Taken from Tube to Left(ml)	---	0	0.5	0.5	0.5	0.5	0.5	0.5	---
Sample Diluent	---	1.0	0.5	0.5	0.5	0.5	0.5	0.5	1.0
Final Conc.(ng/ml)	10	10	5	2.5	1.25	0.625	0.312	0.156	0

Antibody Concentrate Preparation (Step 5)

Microplate Strips Used	2	4	6	8	10	12
Working Stock(ul)	20	40	60	80	100	120
Conjugate Diluent(ml)	2.0	4.0	6.0	8.0	10.0	12.0

HRP Conjugate Concentrate (step 7)

Microplate Strips Used	2	4	6	8	10	12
Working Stock(ul)	20	40	60	80	100	120
Conjugate Diluent(ml)	2.0	4.0	6.0	8.0	10.0	12.0