

Product: Mouse Double-stranded RNA-specific adenosine

deaminase, DRADA ELISA Kit

Specificity: Recombinant and natural Mouse Double-stranded

RNA-specific adenosine deaminase, DRADA

Synonyms: Double-stranded RNA-specific adenosine

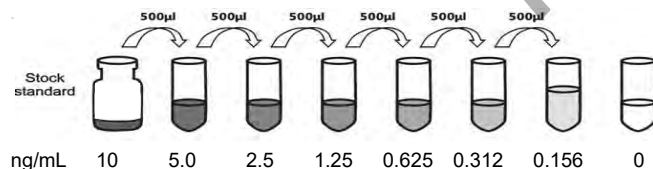
deaminase(DRADA),;

RNA adenosine deaminase 1,;

Catalog No.: MBS2887879 **Sandwich**

Standard Preparation

Reconstitute the Standard with 1.0 mL of Sample Diluent. This reconstitution produces a stock solution of 10 ng/mL. Allow the standard to sit for a minimum of 15 minutes with gentle agitation prior to making serial dilutions (Making serial dilution in the wells directly is not permitted). The undiluted standard serves as the high standard (10 ng/mL). The Sample Diluent serves as the zero standard (0 ng/mL).



Detection Range: 0.156-10 ng/mL

Sensitivity: less than 0.083 ng/mL

Performance Characteristics: Intra-Assay CV: ≤4.8%

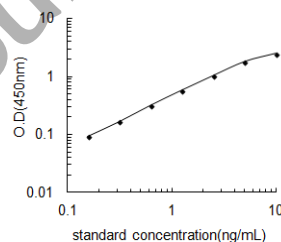
Inter-Assay CV: ≤6.7%

Spike Average Recovery: 104%

Typical Data

Results of a typical standard curve are provided for demonstration only and should not be used to obtain test results.

A standard curve must be run for each set of samples assayed.



ng/mL	Mean O.D.
10	2.497
5.0	1.804
2.5	1.036
1.25	0.58
0.625	0.317
0.312	0.165
0.156	0.092
0	0

IMPORTANT: Please refer to the supplied protocol for more information before the beginning.