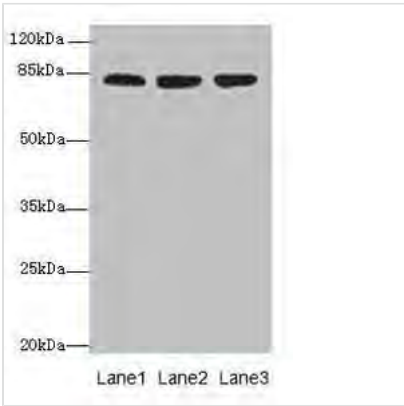


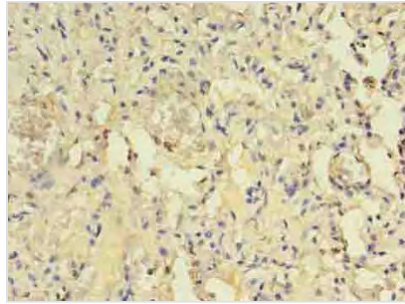
ACAP1 Antibody

| | |
|---------------------|---|
| Product Code | MBS7002808 |
| Storage | Upon receipt, store at -20°C or -80°C. Avoid repeated freeze. |
| Uniprot No. | Q15027 |
| Immunogen | Recombinant human Arf-GAP with coiled-coil, ANK repeat and PH domain-containing protein 1 protein (1-266AA) |
| Raised In | Rabbit |
| Species Reactivity | Human, Mouse |
| Tested Applications | ELISA, WB, IHC; Recommended dilution: WB:1:1000-1:5000, IHC:1:20-1:200 |
| Relevance | GTPase-activating protein (GAP) for ADP ribosylation factor 6 (ARF6) required for clathrin-dependent export of proteins from recycling endosomes to trans-Golgi network and cell surface. Required for regulated export of ITGB1 from recycling endosomes to the cell surface and ITGB1-dependent cell migration. |
| Form | Liquid |
| Conjugate | Non-conjugated |
| Storage Buffer | Preservative: 0.03% Proclin 300 Constituents: 50% Glycerol, 0.01M PBS, PH 7.4 |
| Purification Method | >95%, Protein G purified |
| Isotype | IgG |
| Clonality | Polyclonal |
| Alias | Arf-GAP with coiled-coil, ANK repeat and PH domain-containing protein 1 (Centaurin-beta-1) (Cnt-b1), ACAP1, CENTB1 KIAA0050 |
| Species | Homo sapiens (Human) |
| Research Area | Signal Transduction |
| Target Names | ACAP1 |

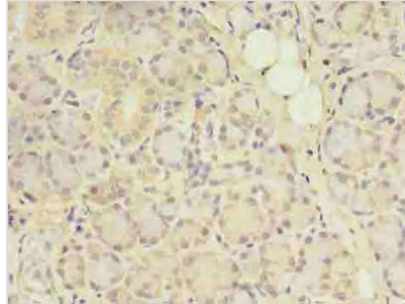
Image



Western blot
All lanes: ACAP1 antibody at 4ug/ml
Lane 1: Mouse lung tissue
Lane 2: Jurkat whole cell lysate
Lane 3: K562 whole cell lysate
Secondary
Goat polyclonal to Rabbit IgG at 1/10000 dilution
Predicted band size: 82 kDa
Observed band size: 82 kDa



Immunohistochemistry of paraffin-embedded human lung tissue using MBS7002808 at dilution of 1:100



Immunohistochemistry of paraffin-embedded human pancreatic tissue using MBS7002808 at dilution of 1:100