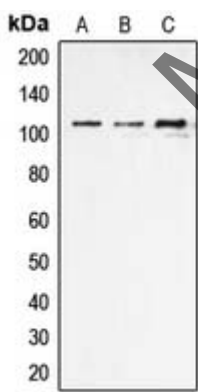
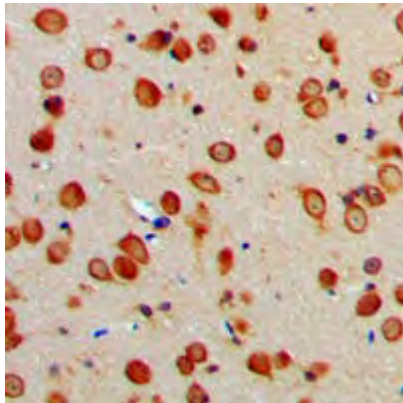


Anti-ERAP1 Antibody

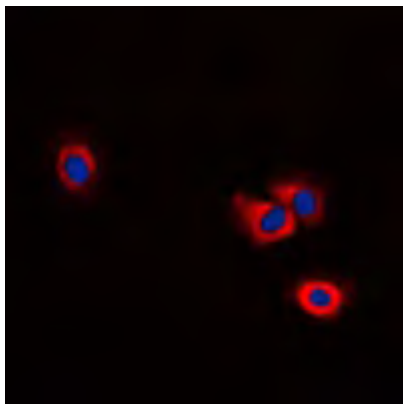
Catalog #	Lot #	Source	Reactivity	Applications
U " o	#\ ° CP1D10A	Rabbit	H, M, R	WB, IH, IF/IC, IP
Immunogen	KLH-conjugated synthetic peptide encompassing a sequence within the center region of human ERAP1. The exact sequence is proprietary.			
Purification	The antibody was purified by immunogen affinity chromatography.			
Specificity	Recognizes endogenous levels of ERAP1 protein.			
Clonality	Polyclonal			
Form	Liquid in 0.42% Potassium phosphate, 0.87% Sodium chloride, pH 7.3, 30% glycerol, and 0.01% sodium azide.			
Dilution	WB (1/500 - 1/1000), IH (1/100 - 1/200), IF/IC (1/100 - 1/500), IP (1/10 - 1/100)			
Gene Symbol	ERAP1			
Entrez Gene	51752 (Human); 80898 (Mouse); 80897 (Rat)			
SwissProt	Q9NZ08 (Human); Q9EQH2 (Mouse); Q9JJ22 (Rat)			
Storage/Stability	Shipped at 4°C. Upon delivery aliquot and store at -20°C for one year. Avoid freeze/thaw cycles.			



Western blot analysis of ERAP1 expression in THP1 (A), NIH3T3 (B), rat kidney (C) whole cell lysates.



Immunohistochemical analysis of ERAP1 staining in human brain formalin fixed paraffin embedded tissue section. The section was pre-treated using heat mediated antigen retrieval with sodium citrate buffer (pH 6.0). The section was then incubated with the antibody at room temperature and detected using an HRP conjugated compact polymer system. DAB was used as the chromogen. The section was then counterstained with haematoxylin and mounted with DPX.



Immunofluorescent analysis of ERAP1 staining in NIH3T3 cells. Formalin-fixed cells were permeabilized with 0.1% Triton X-100 in TBS for 5-10 minutes and blocked with 3% BSA-PBS for 30 minutes at room temperature. Cells were probed with the primary antibody in 3% BSA-PBS and incubated overnight at 4 °C in a humidified chamber. Cells were washed with PBST and incubated with a DyLight 594-conjugated secondary antibody (red) in PBS at room temperature in the dark. DAPI was used to stain the cell nuclei (blue).