

Certificate of Analysis

Product Name: SLC22A6 Ab

Catalog Number: MBS9607289

Lot. Number: 79o0060

Source: Rabbit

Applications: WB 1:500-1:2000, IHC 1:50-1:200, IF/ICC 1:100-1:500, ELISA(peptide)
1:20000-1:40000

Concentration: ~1mg/ml

Immunogen: A synthesized peptide derived from human SLC22A6, corresponding to a region within C-terminal amino acids.

Purification: The antiserum was purified by peptide affinity chromatography using SulfoLink™ Coupling Resin (Thermo Fisher Scientific).

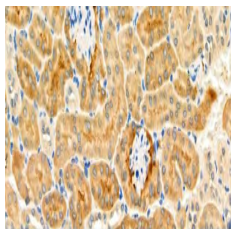
Format: Liquid

Storage: Rabbit IgG in phosphate buffered saline , pH 7.4, 150mM NaCl, 0.02% sodium azide and 50% glycerol. Store at -20 °C. Stable for 12 months from date of receipt.

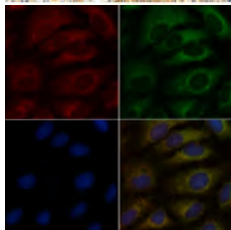
Report Print Date: 02/23/2023

For Research Use Only. Not for use in diagnostic and therapeutic procedures.

Verification Results For SLC22A6 Ab - MBS9607289:



MBS9607289 at 1/100 staining Mouse kidney tissue by IHC-P. The sample was formaldehyde fixed and a heat mediated antigen retrieval step in citrate buffer was performed. The sample was then blocked and incubated with the primary Ab at 4°C overnight. An HRP conjugated anti-Rabbit Ab was used as the secondary Ab.



MBS9607289 staining A549 cells by IF/ICC. The samples were fixed with PFA and permeabilized in 0.1% Triton X-100, then blocked in 10% serum for 45 minutes at 25°C. Samples were then incubated with primary Ab (MBS9607289) and mouse anti-beta tubulin Ab (MBS576566) for 1 hour at 37°C. An AlexaFluor594 conjugated goat anti-rabbit IgG(H+L) Ab (Red) and an AlexaFluor488 conjugated goat anti-mouse IgG(H+L) Ab (Green) were used as the secondary Ab. The nuclear counter stain is DAPI (blue).

For Research Use Only. Not for use in diagnostic and therapeutic procedures.